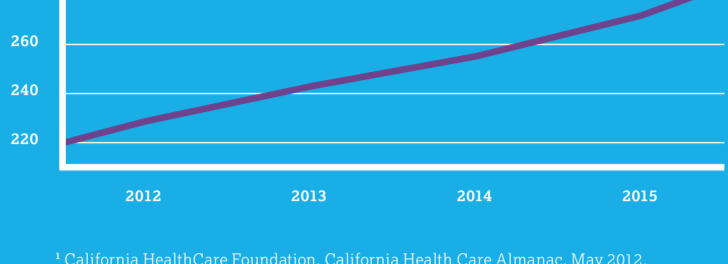


Cal INDEX™

Why It's Needed

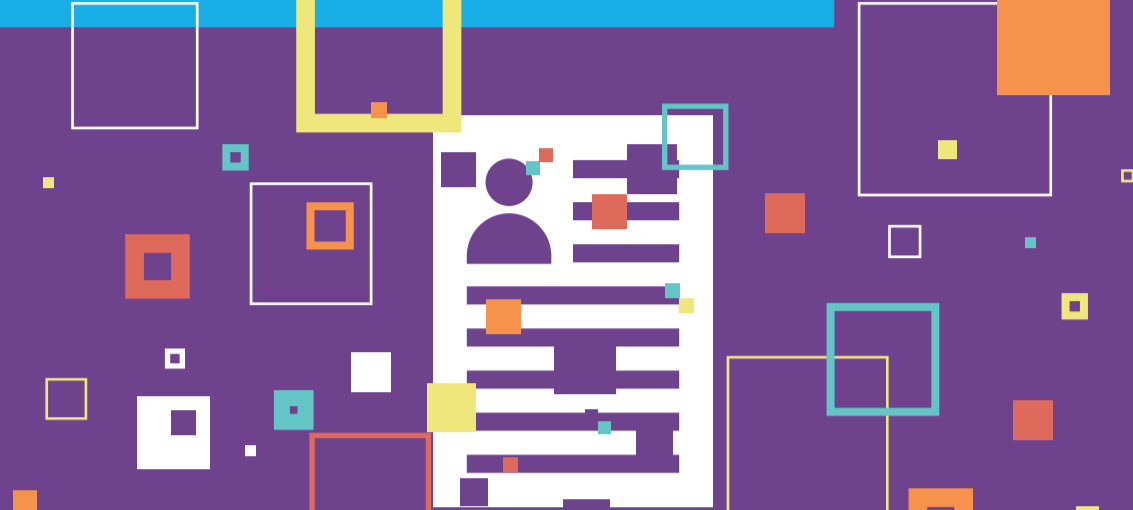
\$230.1 Billion

a year is spent on healthcare expenses in California¹



¹ California HealthCare Foundation, California Health Care Almanac, May 2012.
² California HealthCare Foundation, California Health Care Almanac Quick Reference Guide.

Those expenses rise more than **6%** each year²

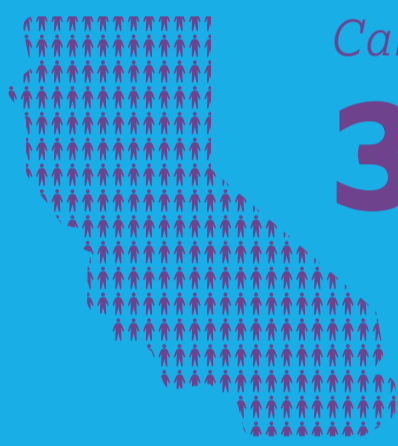


California's current healthcare system is fragmented, inefficient and complex

This often leads to:

- Complications & Confusion
- Hospital Readmissions
- Declines in Functional Status
- Time Lost
- Money Wasted

With more people in California than any other state in the country, this has become a big problem.



California has a population of over **38 Million People**¹

¹ United States Census Bureau, California Quick Facts.

New Solution Needed



California's large, complex healthcare system is difficult to coordinate



Doctors, nurses and hospitals can't share vital patient information easily and securely



A new solution is needed to ensure patients get the best care possible

That's why Blue Shield of California and Anthem Blue Cross created

Cal INDEX

Cal INDEX is a next-generation health information exchange. This comprehensive collection of electronic patient records will include clinical data from multiple healthcare providers and health insurers — all in one place.

At launch, it will include the records of approximately 9 million California residents



That's one fourth of the state
 One of the **largest in the nation**



Cal INDEX is designed to fix the fragmentation, inefficiency and complexity of the current system by:

- Gathering**
Collecting and integrating clinical data from multiple healthcare providers and health insurers
- Consolidating**
Centralizing and storing that data
- Sharing**
Allowing doctors, nurses and hospitals to share vital patient information easily, reliably and securely

The goal is to provide **complete healthcare information:**

- Giving**
California physicians and nurses the ability to make better decisions and provide better patient care
- Lowering**
complications, costs, inefficiencies, readmissions and waste
- Improving**
administration, coordination, delivery, innovation, quality, research and treatments

Cal INDEX™

California Integrated Data Exchange

www.calindex.org